



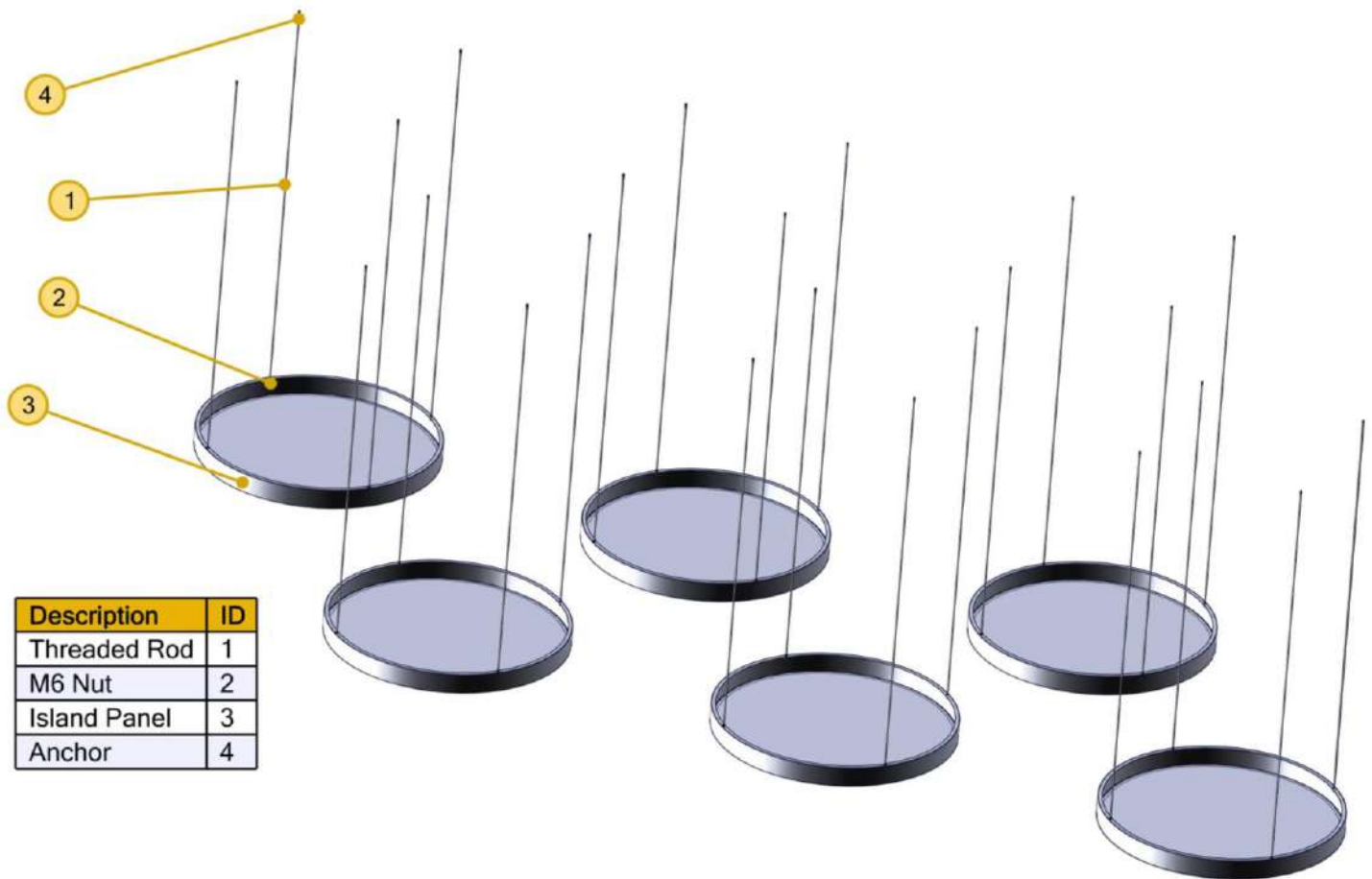
 **YEKMON**

ARCHITECTURE AND DESIGN

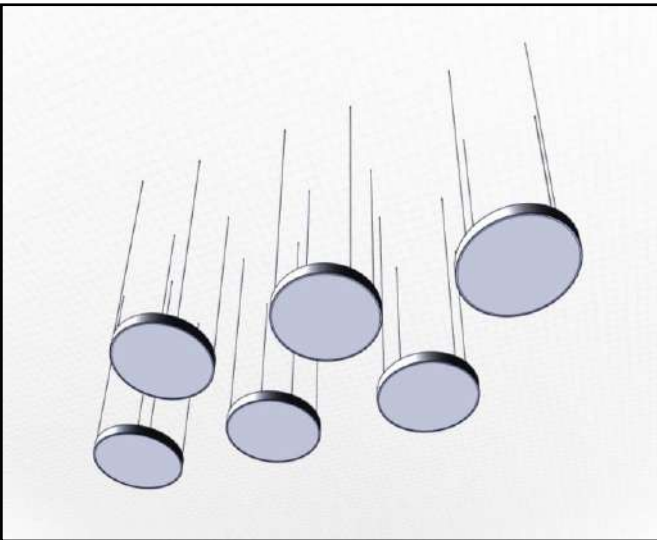
ISLAND SYSTEM

catalogue
2019-2020

ISLAND SYSTEM



- **Varieties of Angles** : Can be installed flat, on a low- slope or on a high-slop or hanging on a Wall
- **Varieties of Shapes** : Wide selection of shapes , sizes, Customizable shape and layout options
- **Varieties of Arrangements:** Install individual or in groups or combination
- perforations and colors available
- Improve sound absorption



MATERIAL OPTIONS

Galvanized Steel/Aluminum

ACOUSTIC

High acoustic performance with acoustic fleece up to α_w : 1,00

HUMIDITY

Galvanize panel: 90% RH

Aluminum panel: 100 % RH

LIGHT REFLECTION

Straight Panel: 9010 Painted % 86

Perforated Panel : 9010 Painted % 72

HYGIENE

High performance in Blocking bacterial formation on panel surfaces by applying anti-microbial paint.

PAINT

Prior to paint. Sensitive surface cleaning and phosphate coverage is applied. 60 minimum micron powder paint is sprayed by electrostatic system through 6 robots and cooked in a 180 meters long oven. The entire painting process takes place automatically by computer control.

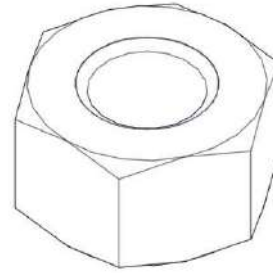


ELEMENT SPECIFICATION

1. Threaded Rod



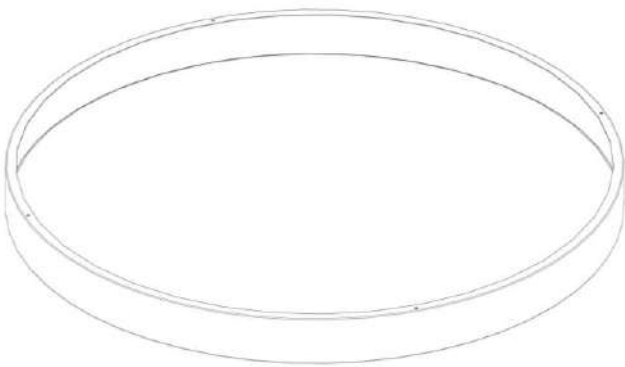
2. M6 Nut



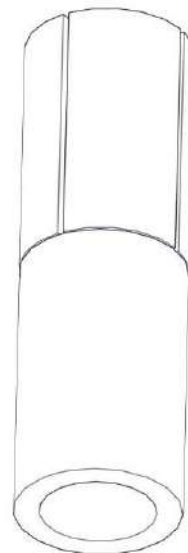
T : $\varnothing 6 \text{ mm}$ Galvanized Steel
L : Max 2000 mm

Type : M6 Nut Steel

3. Island Panel



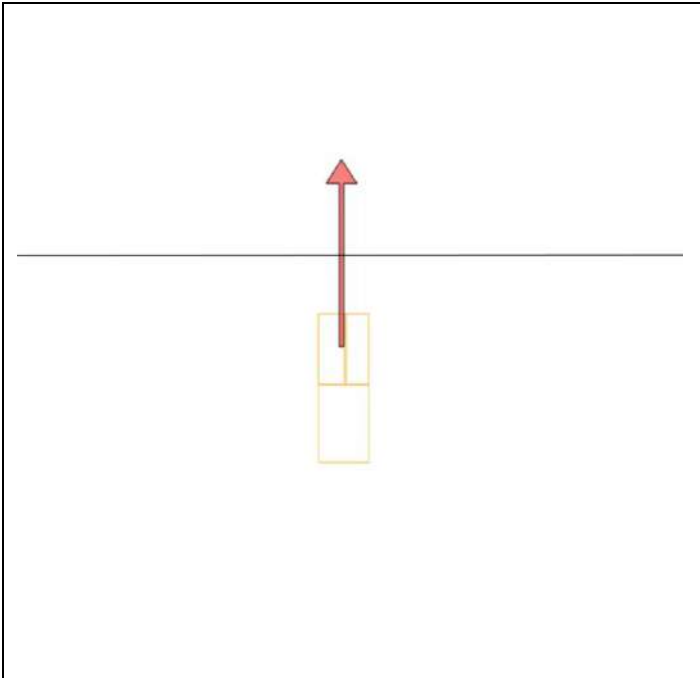
4. Anchor



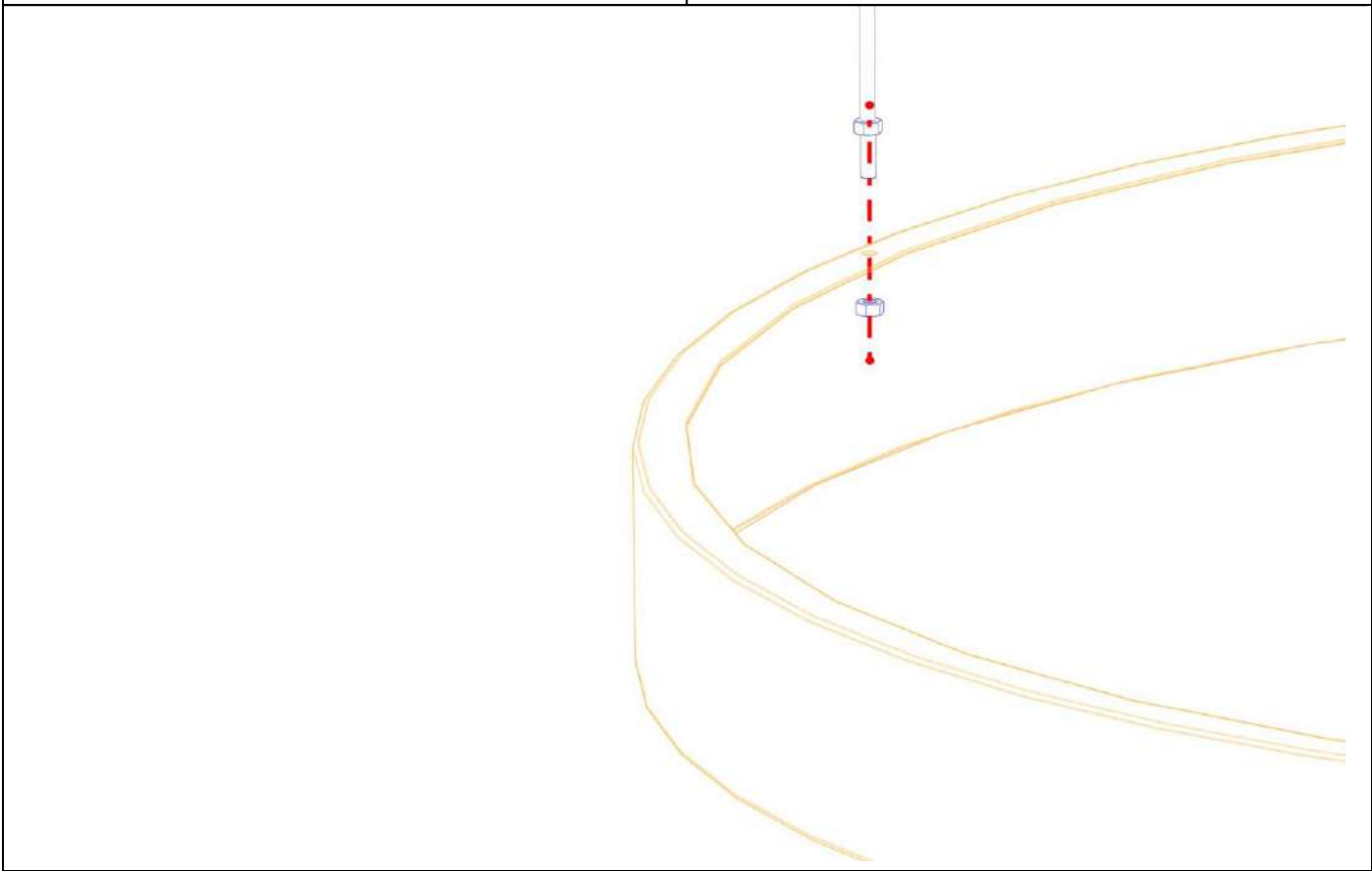
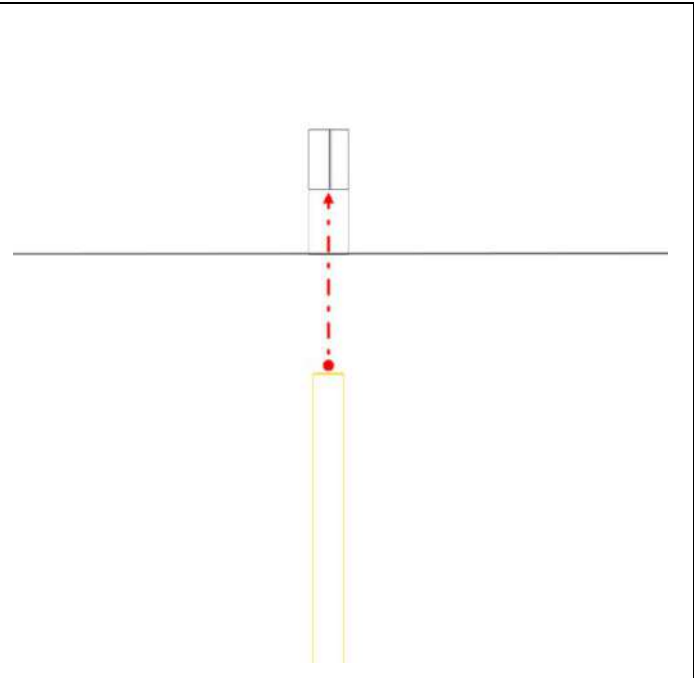
T : 1,0 mm Galvanized Steel

T : $\varnothing 6 \text{ mm}$ Galvanized Steel
H : 25 mm

STEP 1.



STEP 2.



STEP 3.

OUR OPTIONS & YOUR CHOICE

HANGING OPTIONS:

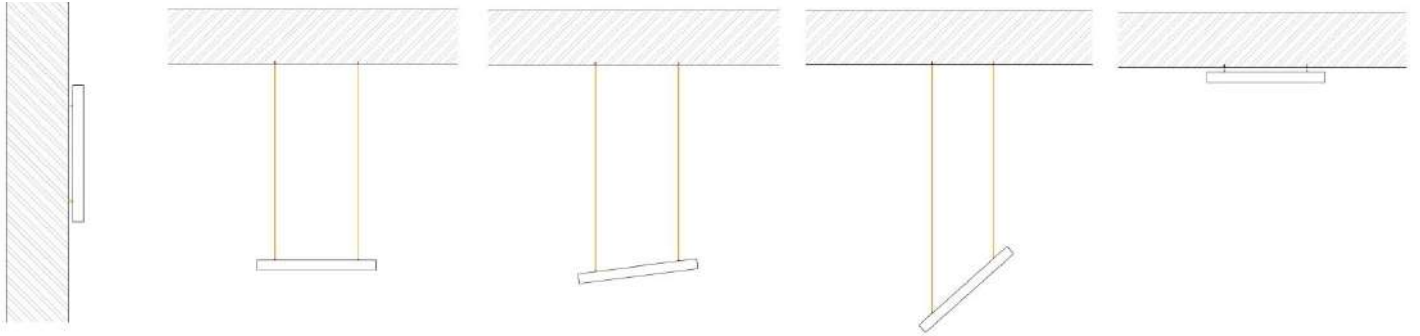
Wall Hanging

Flat Hanging

Low-Slop Hanging

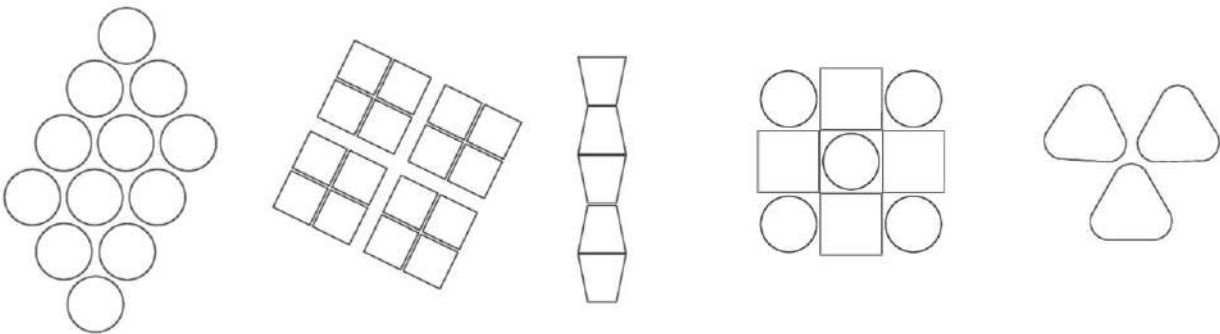
High-Slop Hanging

Small-Gap Hanging



GROUPING OPTIONS:

- Individual Panels
- Grouped Panels
- Combination Panels



- For more details on calculation and methodology, please contact **YEKMON**.